



All-on
Implant solutions

New scan strategy for All-On-X with CAPS

Dentist: **Dr. Philippe Nuytens**

ALL-ON-X WITH CAPS CLINICAL CASE

Case by Philippe Nuytens

STEP 1: IMPLANT SURGERY

- 6 BONE LEVEL IMPLANTS
- GUIDED DAS SURGICAL KIT
- IMPORTANT: Place implants perpendicular to antagonist arch



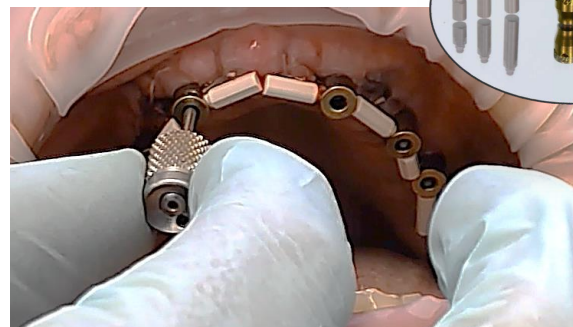
STEP 2: DAS MULTI UNIT INSTALLATION + HEALING CAPS

- Use regular healing caps in anterior area.
- Use wide healing caps in posterior area.

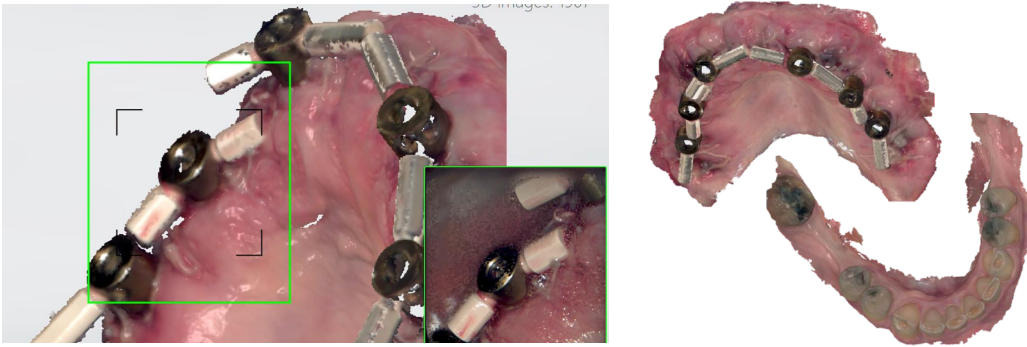


STEP 3: REMOVE HEALING CAPS + INSTALL REFERENCE SCANBODY + PEEK PINS

- FIRST: Mount PEEK PINS to REFERENCE SCANBODY extraorally.
- PEEK PINS: 3 Different Lengths: 6 9 13 mm
- INSTALL ASSEMBLED PARTS TO DAS MU UNIT ABUTMENTS
- MAKE A CHAIN CONNECTION.



STEP 4: OBTAIN A MAXILLARY IOS SCAN AND AN ANTAGONIST SCAN

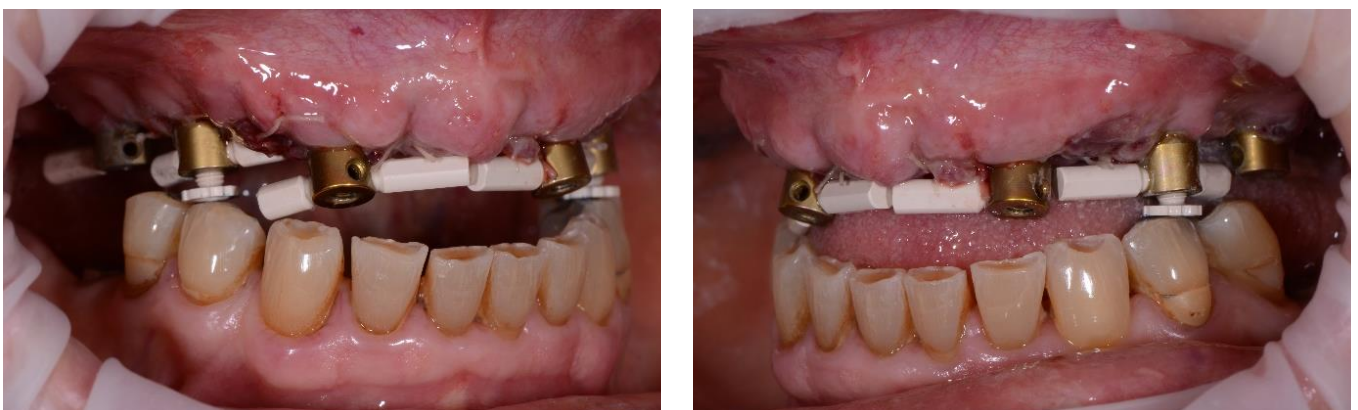


STEP 5: CAPS PILLARS WORKFLOW



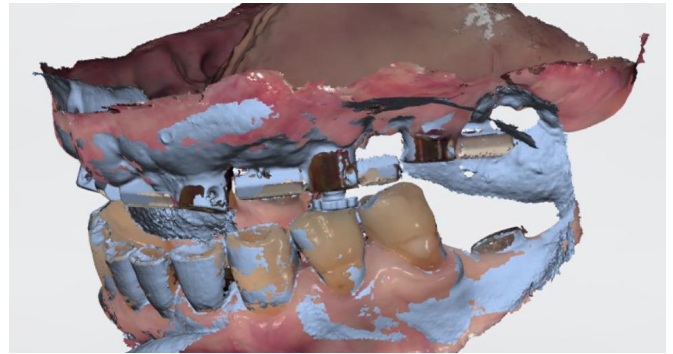
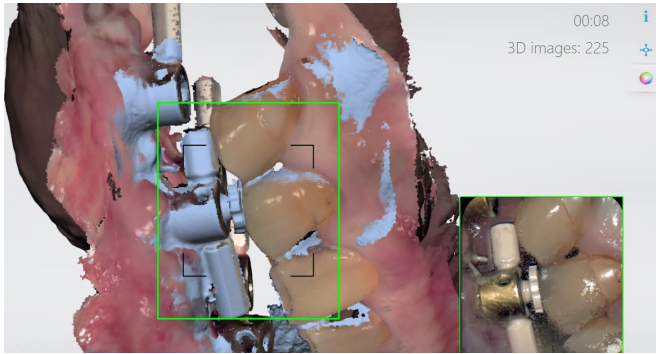
- 3 Different Heights: 3.8 6 8 mm.
- Mount at least 1 CAPS pillar on EACH SIDE.
- By screwing the CAPS pillar in or out the screw access channel of the REFERENCE SCANBODY, the patient's vertical dimension of occlusion is adjusted.
- Ask the patient to repeat the closure path several times before obtaining virtual occlusal records.

With use of the bilateral manipulation technique, the patient's mandible is guided into centric relation.

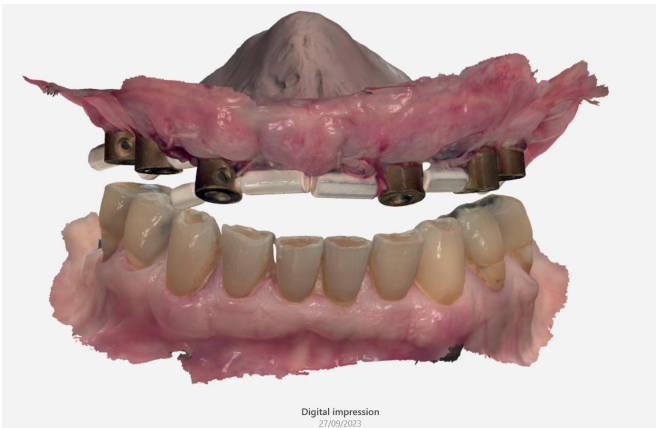


- **Note:** in order to improve the stability of virtual occlusal records registration, more CAPS pillars could be mounted to multiple REFERENCE SCANBODIES in the edentulous arch. But, it is unnecessary to mount CAPS pillars to each REFERENCE SCANBODY.

STEP 6: OBTAIN VIRTUAL OCCLUSAL RECORDS USING IOS



- Virtual occlusal records are obtained using an IOS while the patient's mandible is guided into centric relation at the established vertical dimension of occlusion.



ON DOCTERS REQUEST:

STEP 7: PERFORM SHEFFIELD ONE SCREW TEST WITH U SHAPE D MILLED VERIFICATION JIG

- Recommended to make an U shaped verification jig in radiopaque PMMA in order to radiographically check the passive fit (Technique by Philippe Nuytens)
- Use a guide pin (same connection as the multi- unit abutment screw)



STEP 8: TRY-IN BRIDGE

- Further, you can choose for a temporary bridge or try-in for visual and functional inspection of the bite and esthetics

MORE INFO ON THE CAPS SYSTEM:

Read Dr. Philippe Nuytens article for more in-depth knowledge about the complete-arch pillar system (CAPS)



